

# *spectrum A*



*Proven radio technology  
with integrated LCD!*

*Top features:*

*Feedback!*

*New safety features!*

*Vibration alarm!*

*radiomatic® AFS!*

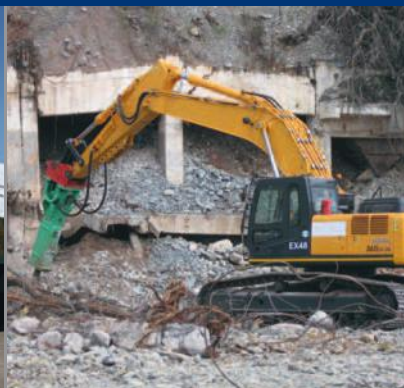
*Micro / orthogonal drive!*

*... and much more!*

**DECT**  
option



*Quality in Control.*



# spectrum A



## Highlights:



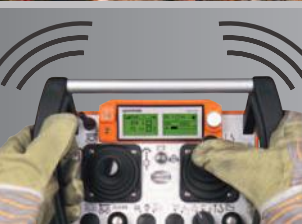
### Feedback via LCD (option)

The spectrum A offers the indication of numerous crane / machine data, warnings and error notifications – a considerable increase in safety.



### DECT (option)

This completely automated technology ensures radio control without frequency conflicts. Manual frequency switches are no longer necessary.



### Vibration alarm (option)

This function is triggered by low battery level. As an option, it can be used for feedback information such as warnings of impending overloads.



### Micro / orthogonal drive (option)

These functions protect the operator in difficult driving maneuvers from dangers resulting from driving too fast or unintended direction changes of the crane / machine.



### New safety features (option)

In emergency situations, radiomatic® shock-off / zero-g can trigger an automatic shutdown of the control and thus ensure additional safety.

## Carrying methods:



Hip belt.



Shoulder / neck strap.

## Applications:

Cranes, machinery and numerous other applications.



Version for construction cranes.



Version for hydraulic applications.

## Further details:

- Up to 2 joysticks or up to 6 linear levers / numerous push buttons, toggle switches, rotary switches or rotary buttons / STOP impact switch.
- LED for indication of operation / battery status.
- radiomatic® iON for the quick activation of a spare transmitter.
- 2 rechargeable NiMH exchange batteries, approx. 9 h of continuous operating time.
- Robust plastic housing, protection class IP 65.
- Weight: approx. 2 kg (4.4 lbs.) including battery.
- radiomatic® AFS = Automatic Frequency Selection for construction crane and mobile hydraulic applications (optional for other systems).
- Manual frequency switch (for systems without radiomatic® AFS).
- Further options: front panel lighting, tandem operation, catch-release, z-axis switches, radiomatic® infrakey, cable control.